

# WPA Projects

City Tech Fall 2024

Art of the United States



# Roosevelt's New Deal



## Summary of the four New Deal arts programs:

- Public Works of Art Project
- Section on Painting & Sculpture
- Treasury Relief Act
- Works Projects Administration Federal Art Project



Earle  
Richardson, *Employment of  
Negroes in Agriculture*,  
1934, oil on canvas,  
Smithsonian American Art  
Museum, Transfer from the  
U.S. Department of Labor,  
1964.1.183





Douglass Crockwell, *Paper Workers*, 1934, oil on canvas, Smithsonian American Art Museum, Transfer from the U.S. Department of Labor, 1964.1.152

Kenneth M. Adams, *Juan Duran*, 1933-1934, oil on canvas, Smithsonian American Art Museum, Transfer from the U.S. Department of Labor, 1964.1.148





Ivan Albright, *The Farmer's Kitchen*, ca. 1934,  
oil on canvas, Smithsonian American Art  
Museum, Transfer from the U.S. Department  
of Labor, 1964.1.74







Millard Sheets, *Tenement Flats*, 1933-1934, oil on canvas, Smithsonian American Art Museum, Transfer from the U.S. Department of the Interior, National Park Service, 1965.18.48



# Characteristics of FSA photography

- Encourages Americans to “face” problems of the Great Depression
- Objectivity is admired and photography is thought of as an objective medium
- The 1930s – the documentary decade
- The real, the “actual”
- Susan Sontag has argued that FSA photographs function as a way to help people take possession of spaces that they would normally feel insecure in
- Photographic meaning is not fixed
- Photography as a public entity for print culture

# Graflex camera, 4x5





Jacob August Riis

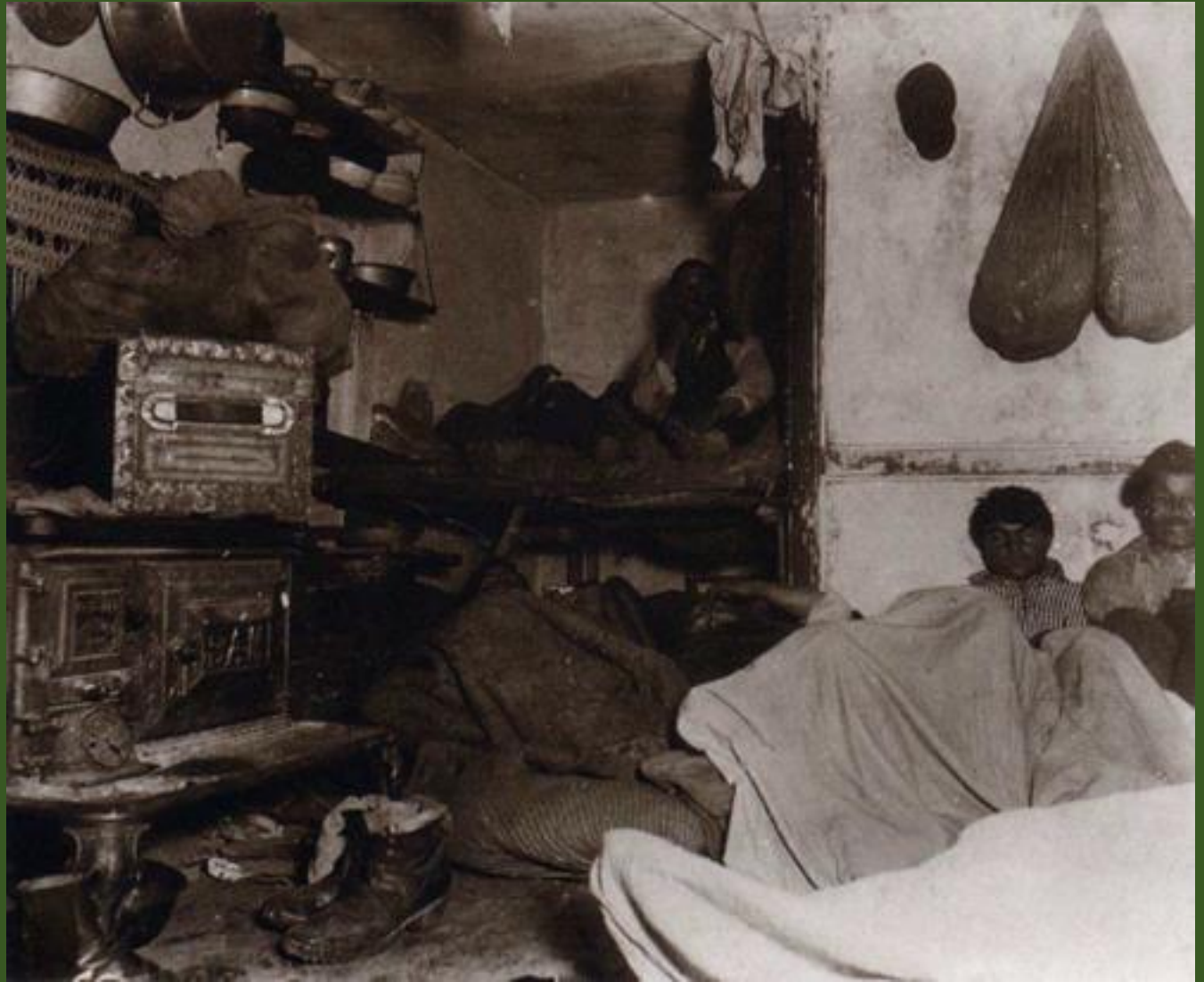
Bunks in a Seven-Cent Lodging  
House, Pell Street, c. 1888

Published in *How the Other Half  
Lives* 1890



Jacob A. Riis,  
"Five Cents a Spot"  
Lodging House, Bayard Street, 1889

How the Other Half Lives 1890







Lewis Hine  
Child in Carolina Cotton Mill  
1908

Dorothea Lange

White Angel Bread Line, San Francisco, 1933

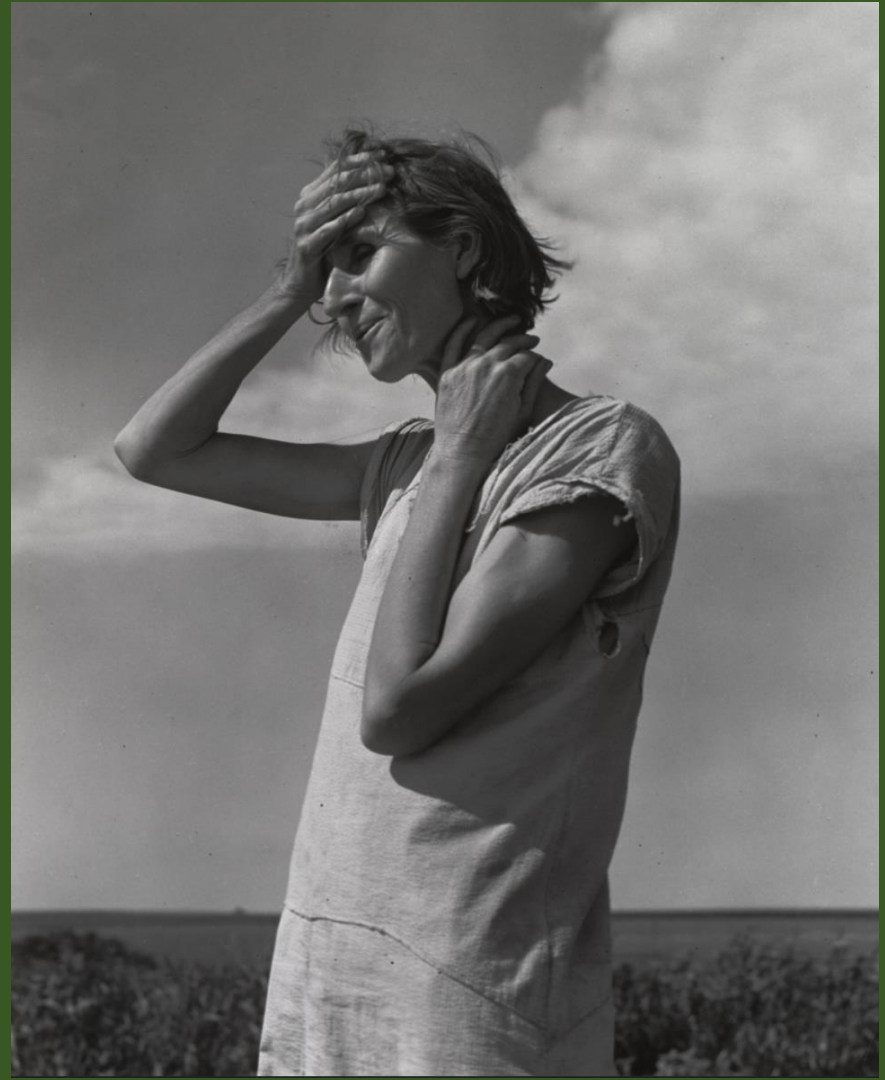




Dorothea Lange, Migrant Mother, 1936



Dorothea Lange, *Woman of the High Plains*,  
Texas Panhandle, 1938



Dorothea Lange  
Migratory Cotton Picker, Eloy,  
Arizona, November 1940

